

Radium Box

Step by Step Mantra MIS100 V2 Drivers Installation (Complete Guide)

****For easy RD installation & accessible for common people.**

How To Download Mantra MIS100 V2 Drivers Installation?

What is Mantra MIS100 V2?

Mantra Iris Scanner MIS100 V2 single IRIS (Eye) Scanner is STQC certified iris scanner having lowest FRR & FAR. Mantra MIS 100 V2 , is applicable for authentication in different portals such as AB-NHPM Empanelled Hospitals, Health and Medical, Skill Development, Smart card application, UIDAI, NREGA, Public applications, Jeevan Praman, PDS, Ayushman Bharat, Aadhaar, CSC, DSC. Mantra MIS 100 works perfectly with its high cost-effective advantage supports Windows, Linux, and Android Operating System.

Mantra RD Service Registration Online for MIS 100 USB Single Fingerprint Scanner device is necessary for Registered Device service that client machine must interact with Mantra's Management Server.

Requisites for Mantra Drivers :

- Required OS
 - Windows 8
 - Windows 8.1
 - Windows 10
- 32 bit and 64 bit both supports with custom business applications
- Administrator login over computer/laptop
- High speed internet connection
- Antivirus should be disable
- Time zone of computer/ laptop is (UTC+05:30) Chennai, Kolkata, Mumbai, New Delhi

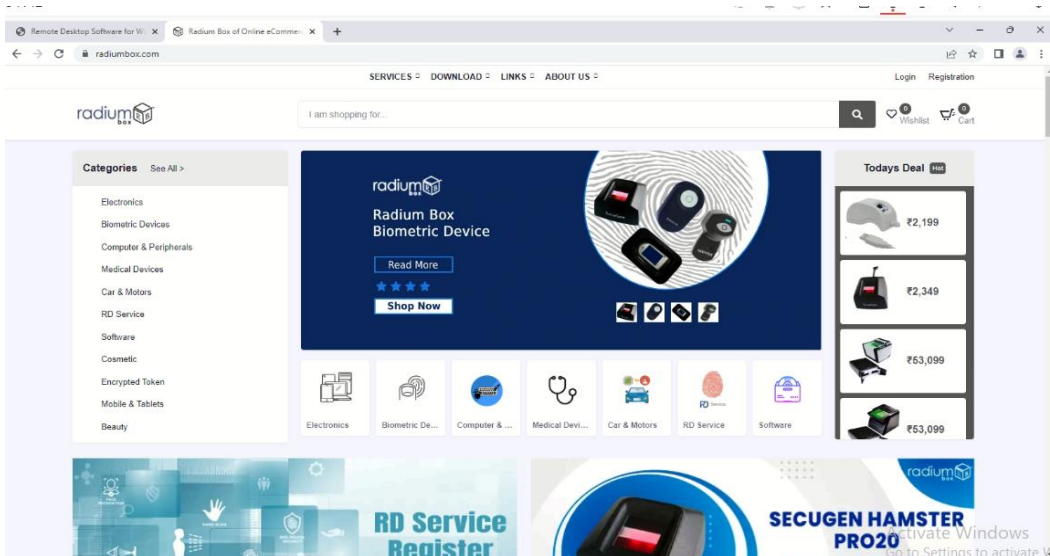
RD service renewal is compulsory before following the below steps , so kindly apply by using below link:

<https://www.radiumbox.com/rd-service/online-register-biometric-device>

Steps for Downloading Mantra MIS100 V2 Drivers Installation:

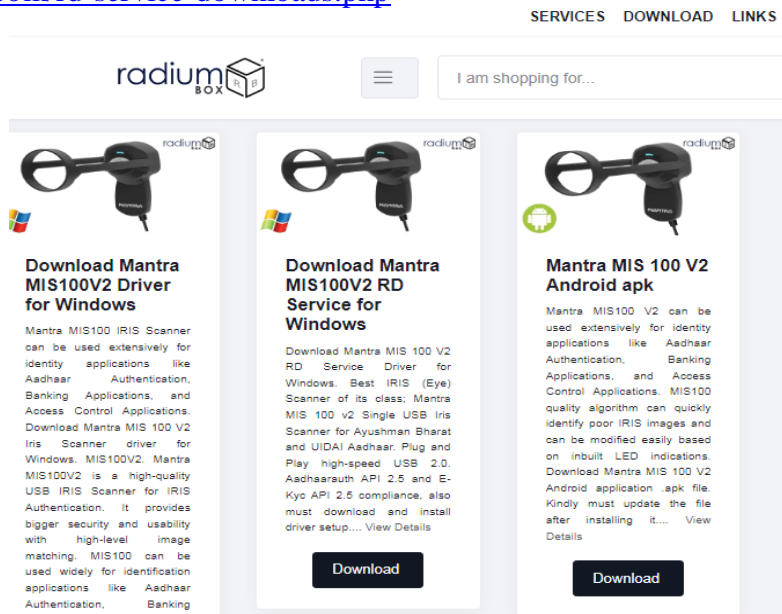
Step 1: RD Service setup for Mantra MIS100 V2 is available on our official website. Download Mantra MIS100 V2 Driver by visiting the following link:

<https://www.radiumbox.com/>

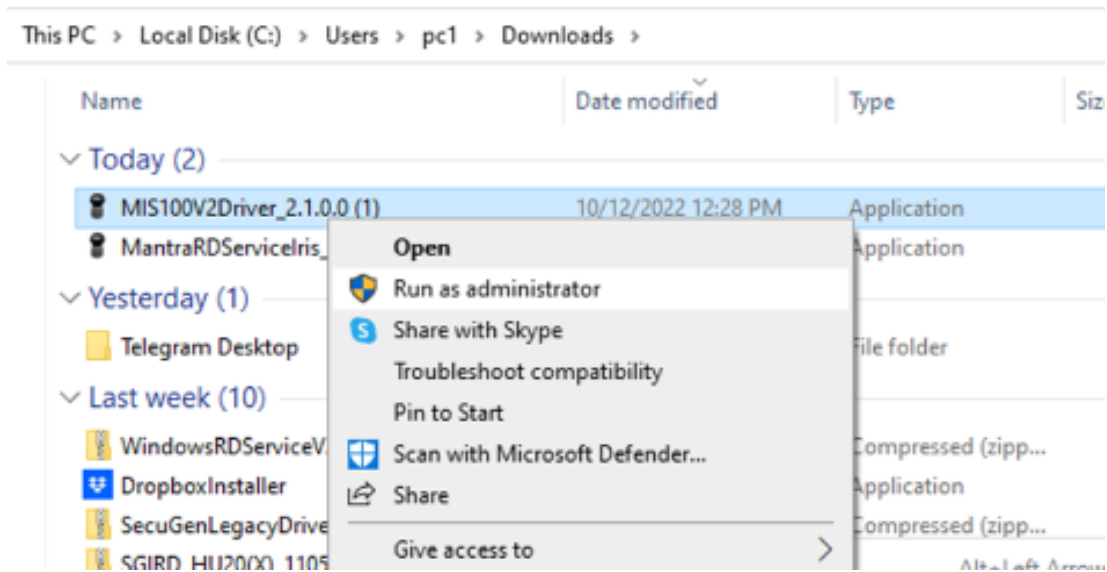


Step 2: After visiting our official website, click on the Download option that appears at the top of the home page. In the Download page, click on the Download Driver option available under Mantra RD Service.

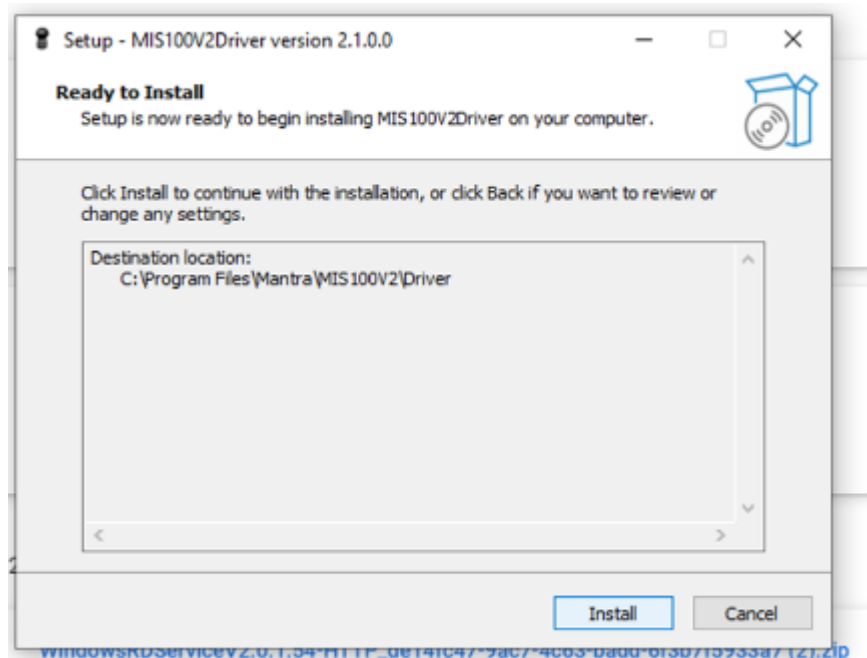
<https://www.radiumbox.com/rd-service-downloads.php>



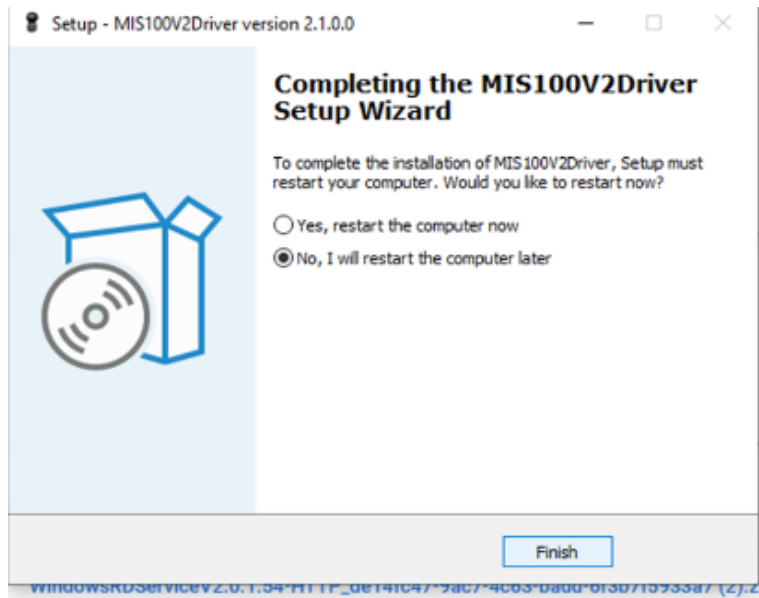
Step 3: After selecting the Download Driver option, you will be redirected to a new page where you need to click on the “Mantra MIS100 V2 Driver” based on the requirements of your system.



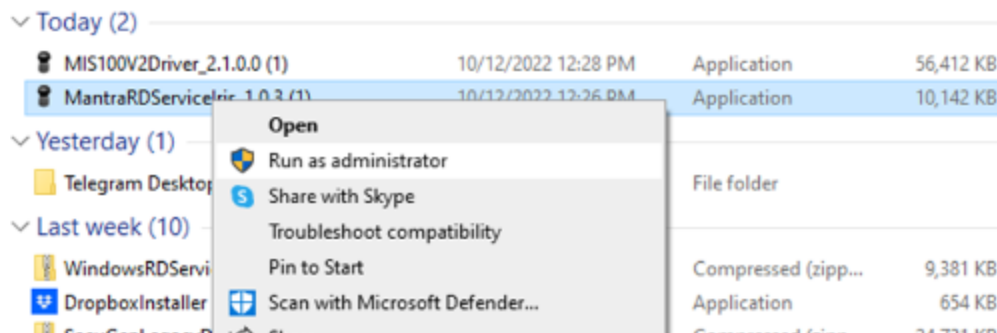
Step 4: Complete the installation by clicking the install:.



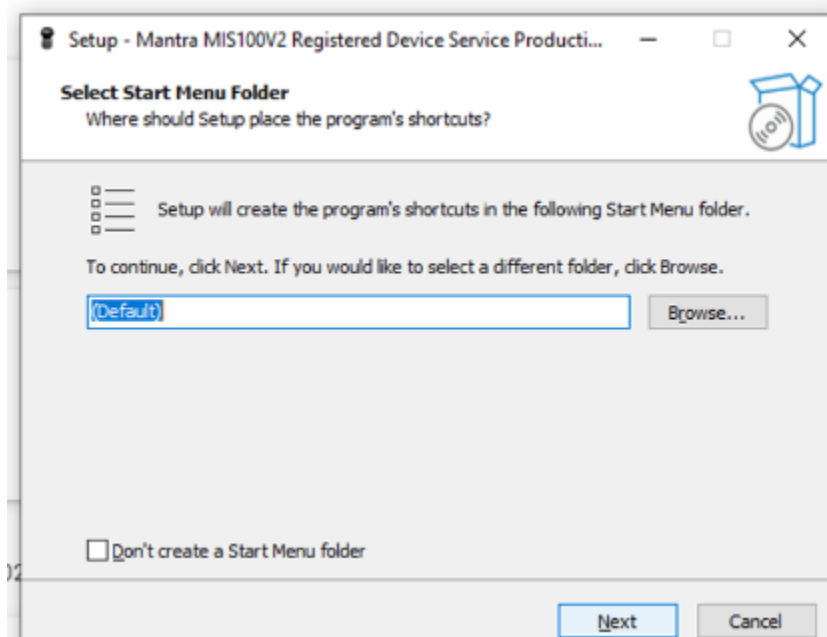
Step 5 : MIS100 Driver setup successfully done.



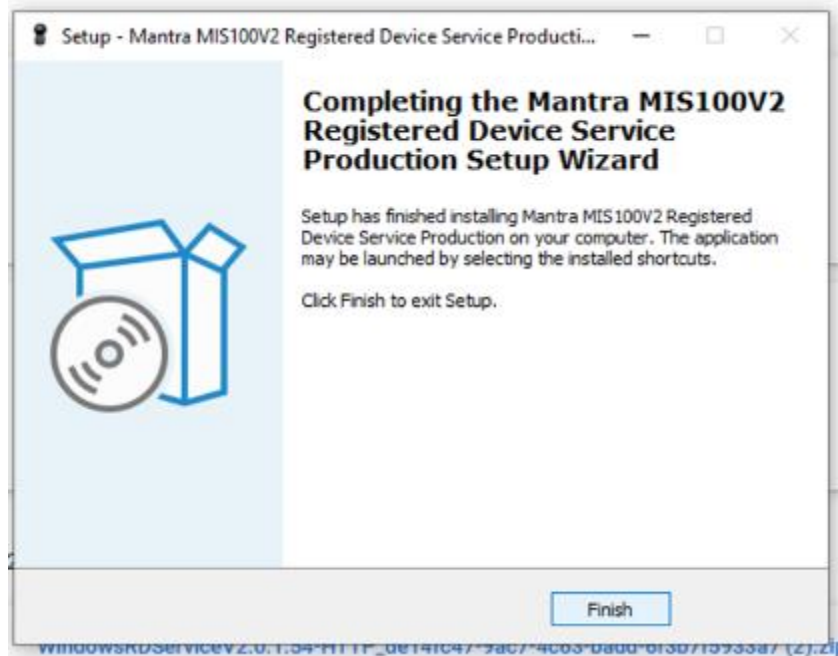
Step 6: Now Mantra Rd service need to be installed from the same folder



Step 7 : Install the setup as per the default settings



Step 8: Mantra Registered Device Production Setup has been completed successfully.



Step 9: Mantra AVDM Framework is now ready to use, User biometric data is successfully captured on calling the capture function.



For any technical assistance/enquiry please call us-+91 84343 84343

****Disclaimer:** The brand names & information used in this pdf is for general demonstration and informational purpose only . The graphical representation is for user understanding easy demonstration.